

MI Guzzler

MapInfo Professional Plug-In

Product Overview

MI Guzzler is a MapInfo Professional® Plug-In that utilizes SRC, LLC's Guzzler™ engine to calculate drive times and distances.

Key Features:

- Single Point-to-Point
- Single Drive Time
- Single Drive Distance
- Batch Point-to-Point
- Batch Drive Time or Distance

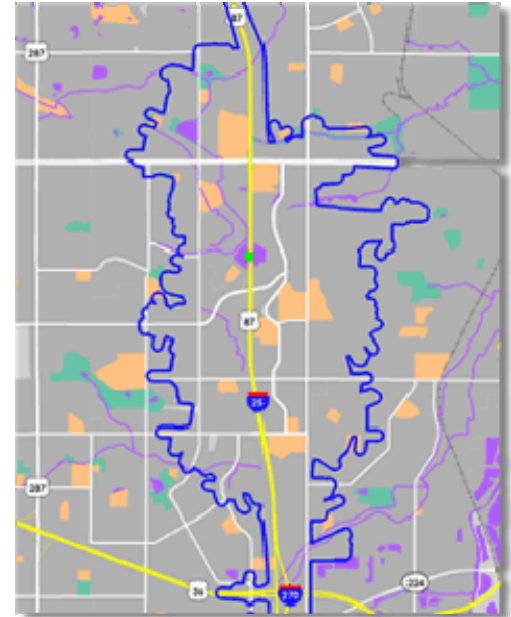
This functionality includes, calculating point-to-point drive times between two geocoded files, creating a matrix between these points, creating drive times (Isochrones) and drive distances (Isogons) from selecting a point on the map or a point source file.

MI Guzzler Requirements:

- This application is powered by SRC, LLC's Guzzler™ product and as such requires the product to be installed and licensed properly.

- This application requires MapInfo Professional® v8.5 due to the XML requirements.




- This application also requires the user to have already geocoded the two input MapInfo format tables ('From' and 'To') if using the point-to-point functionality. If using the Isogon/ Isochrone batch functionality one geocoded file will be required.



When installed, MI Guzzler appears as a menu item on the MapInfo Professional® menu bar. All input tables are expected to be mappable as point objects and open in the environment.



Tool Buttons

-  This option activates the Point-to-Point Map Tool (PTP Tool). Upon completion of the PTP Tool the user is presented with a note dialog displaying the Time and/or Distance.
-  This option activates the Drive Time Map Tool (DT Tool). Upon completion of the DT Tool one or many polygons are created in a temporary layer called 'DriveTimesTemp'. This layer will have one field named 'DriveType', populated with the value and type of the polygon.
-  This option activates the Drive Distance Map Tool (DD Tool). Upon completion of the DD Tool one or many polygons are created in a temporary layer call 'DriveDistanceTemp'. This layer will have one field named 'DriveType', populated with the value and type of the polygon.

MI Guzzler Menu



Batch Point-to Point & Batch Drive Time or Distance

Point To Point

From Table: [Open Table]

Reference Field: []

To Table: [Open Table]

Reference Field: []

Optimization

- Time (Returns time and distance)
- Distance (Returns distance only)

Maximum Time (Minutes) [15]

Output

- Append to end of 'TO' table
- Create separate output table
- Create Matrix Table

OK Cancel

Batch Drive Time and Distance

Source Table: []

Optimization

- Time (Returns Time and Distance)
- Distance (Returns Distance Only)

Drive Value

- Value/s [] i.e. 5 or 3,5,7
- From Column []

OK Cancel



7000 East Belleview Avenue
Suite 260
Greenwood Village, CO 80111

Phone: 877-973-6400
Fax: 720-200-4323
Email: sales@korem.com

WWW.TELE-MART.COM

Business Intelligence, geospatial technology, and demographic analysis - some of the reasons why KOREM Corporation is pioneering business intelligence through geography. It takes the right people, the right technology and a bold vision to be the new leader in today's business geospatial technology sector. Geospatial and Business Intelligence™ is KOREM Corporation.

KOREM Corporation helps you develop robust and responsive technology strategies by implementing turnkey geospatial technology solutions into your business process applications. The foundation is set - 80% of all data has a geographic component. We pay special attention to seamless integration, workflow automation, ease-of-use, simple deployment, and, above all, business value; across the enterprise and down to the desktop level. Simply put, we help you increase the speed of decision-making by spatially-enabling your business against the backdrop of an ever-changing and unpredictable marketplace. Are you seeing your business intelligence through geography?